

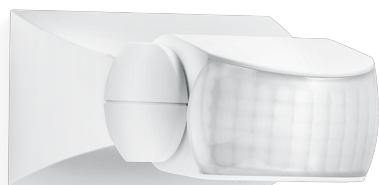
# Data sheet

## Motion detector

### IS 1

white

EAN 4007841600310



#### Function description

Targeted detection and attractive price. Infrared motion detector IS 1, for indoors and out, ideal for targeted coverage of small areas, 120° angle of coverage, reach up to 10 m, selectable time and twilight threshold, sensor turns through 30° and tilts through 180° for exact adjustment of the detection zone.

#### Technical specifications

Type	Motion detectors
Dimensions (L x W x H)	50 x 80 x 120 mm
Mains power supply	230 – 240 V / 50 Hz
Sensor Technology	passive infrared
Application, place	Indoors
Installation site	wall, ceiling
Type of installation	Surface wiring
Switching zones	260 switching zones
Electronic scalability	No
Mechanical scalability	No
Optimum mounting height	2 m
Detection angle	120 °
Sneak-by guard	No
Capability of masking out individual segments	Yes
Reach, radial	r = 3 m (9 m <sup>2</sup> )
Reach, tangential	r = 10 m (105 m <sup>2</sup> )
Twilight setting TEACH	No
Twilight setting	2 – 2000 lx

# Data sheet



Motion detector

## IS 1

white

EAN 4007841600310

### Technical specifications

Time setting	8 s – 35 Min.
Switching output 1, resistive	500 W
Switching output 1, number of LEDs / fluorescent lamps	4 pcs.
Constant-lighting control	No
Basic light level function	No
With remote control	No
Interconnection	Yes
IP rating	IP54
Material	Plastic
Ambient temperature	-20 – 50 °C
Colour	white
Colour, RAL	9001
Manufacturer's Warranty	3 years
Version	white
PU1, EAN	4007841600310

Ташев-Галвинг ООД  
www.tashev-galving.com